

STEP 4:

PREPARE THE INJECTION SITE

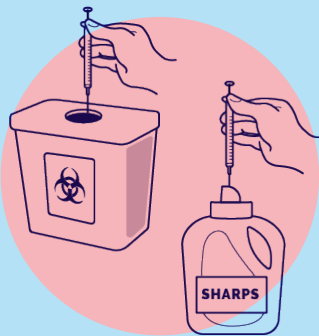
If you want, you can apply ice or an over-the-counter numbing cream to the injection site before cleaning it. This may help with discomfort.

2. Wipe the area where you plan to give the injection with a new alcohol swab and let air dry. If you do not let it air dry, it might cause stinging during the injection.
3. Do not touch this area again until you give the injection.

STEP 5

DISPOSE OF THE NEEDLES AND SYRINGE

1. All sharps (needles and syringes) should be disposed of in a sealable, puncture-resistant container.
 - a. You can get a home sharps container from most drugstores.
 - b. You can also use a plastic container, like a laundry detergent bottle or milk jug. If you do, the bottle or jug you use must have a lid.



2. You can use the same container for your sharps until it is about $\frac{3}{4}$ of the way full.
3. When your sharps container is $\frac{3}{4}$ of the way full, tape it shut and label it "syringes," "sharps," or "needles." Most home sharps containers are pre-labeled, but if you use a detergent bottle or milk jug you will need to label it yourself.

4. After your sharps container is taped and labeled, you can put it in the regular trash. Do not put it in the recycling.
5. If you need more information about how to dispose of your syringes, call 3-1-1 for help.

INJECTION DATES AND NOTES:

PATIENT ADVOCATE:

ADVOCATE CONTACT LABEL

kind
CLINIC

A PROGRAM OF TEXAS HEALTH ACTION

KINDCLINIC.ORG
1-833-WE-R-KIND

A KIND CLINIC GUIDE TO

SUBCUTANEOUS (SUBQ) INJECTIONS



WHAT IS A SUBCUTANEOUS (SUBQ) INJECTION?

A subcutaneous injection is a way of injecting medication into the subcutaneous tissue that is directly under the skin. Medication given this way absorbs into the bloodstream more slowly than medication injected directly into the muscle. Subcutaneous injections can be given at a 45° or 90° angle.

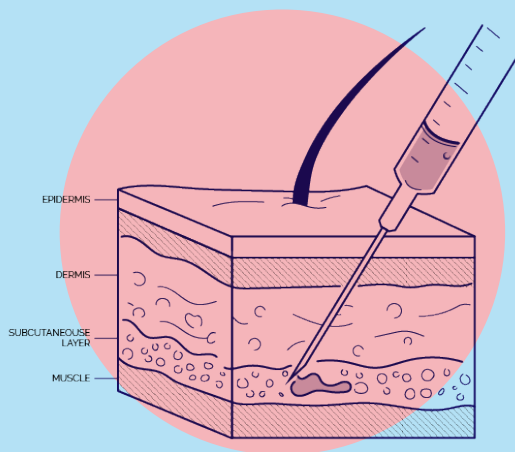
WHAT DO I NEED FOR A SUBQ INJECTION?

To give yourself a SubQ injection, you will need:

- Medication in a vial
- One disposable syringe
- 2 needles or one 18 or 20 gauge needle to draw up medication or one 25 or 26 gauge, 5/8th inch needle for the injection. Note: The needle size is described in units called gauge numbers. The smaller the needle gauge, the bigger the needle.
- 2 alcohol swabs (one for vial & one for skin)
- Cotton ball or gauze
- A special, puncture-proof container to throw out the used needles and syringe (sharps container).

WHERE DO I GET THE NEEDLES AND SYRINGES FOR A SUBQ INJECTION?

You can get needles and syringes from PPGT during your visit or from a local pharmacy. **NEVER REUSE OR SHARE SYRINGES OR NEEDLES.** If you need needles or syringes and cannot afford to get them from PPGT or your pharmacy, please visit a local syringe access program.



STEP 1:

SET UP YOUR INJECTION WORK AREA

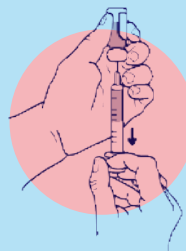
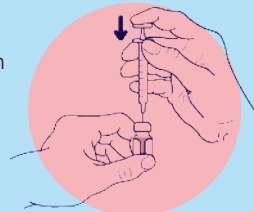
1. Find a comfortable, well-lit place to give yourself your injection.
2. Clean your work area and assemble the supplies listed above.
3. Check the expiration date on the medication. Do not use your medication if it has visible particles, is discolored, or is expired.

4. Wash your hands with soap and warm water or an alcohol-based hand cleaner. Hand washing is one of the most important things you can do to prevent infection.

STEP 2:

PREPARE YOUR INJECTION DOSE

1. If you want, you can warm the vial of medication by rubbing it between your hands before preparing the syringe. This may help with some discomfort during the injection.
2. Take the cap off the vial. Clean the rubber stopper with one alcohol swab and let it air dry.
3. Check the package containing the syringe. If the package has been opened or damaged, do not use the syringe.
4. Hold the 18 or 20 gauge needle by the packaging or the cap and place it securely on the syringe. Do not touch the base of the needle that attaches to the syringe.
5. Pull the 18 or 20 gauge needle cover straight off the syringe.
6. Pull the plunger back and draw air into the syringe. The amount of air drawn into the syringe should be the same amount (mL or cc) as the dose of medication that your clinician prescribed. Do not let the needle touch any surfaces!
7. Set the vial on your work area, with the rubber stopper facing up, and insert the needle straight down through the center of the rubber stopper into the bottle.
8. Push the plunger of the syringe down and push the air from the syringe into the vial.
9. Keeping the needle in the vial, use your other hand to turn the vial upside-down. Do not let go of the vial!
10. Position the needle so the liquid is covering the tip of the needle.

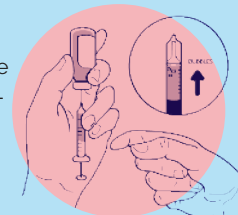


11. Keep the vial upside-down and slowly pull back on the plunger until the syringe is filled with the number (mL or cc) that matches the dose your clinician prescribed to you. As you remove the medication from the vial, the level in the bottle decreases. You may have to lower the needle below the fluid level to draw up the amount of medication you need.
12. Keeping the needle in the vial, check for air bubbles in the syringe. If there are

air bubbles, gently tap the syringe with your fingers until the air bubbles rise to the top of the syringe. Then, slowly push the plunger up to force the air bubbles out of the syringe without removing the needle from the bottle.

13. After air bubbles are gone, pull the plunger slightly past the number (mL or cc) on the syringe that matches your dose.

14. Pull the 18 or 20 syringe with the needle out of the bottle.



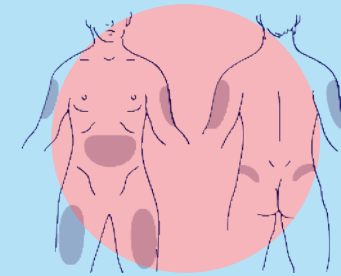
15. Remove the needle and put it into the sharps container without recapping it.
16. Hold the 25 or 26 gauge needle by the packaging or the cap and place it securely on the syringe.

- a. Do not touch the base of the needle that attaches to the syringe.
- b. Do not remove the protective cap from the needle until you are ready to inject.

17. Gently push the plunger to the number (mL or cc) matching your dose, making sure that you have the correct dose in the syringe. It is very important that you use the exact dose prescribed by your clinician.

STEP 3:

SELECT THE INJECTION SITE



There are three areas you can pick for your injection site. It is extremely important to rotate sites to keep the skin healthy. Repeated injections in the same spot can cause scarring and hardening of fatty tissue that will interfere with absorption of medication.

1. Abdomen, at or under the level of the belly button.
 - a. To find where to inject, place your hands on your lower ribs.
 - b. Use the area below your hands for injections. You can use any area you can pinch fatty tissue.
 - c. Do not use the area directly around your belly button. Make sure your injection is at least 1 inch away from it.
2. Back or side of the upper arm.
 - a. To find where to inject, fold one arm across your chest.
 - b. Place your other hand on your shoulder and draw an imaginary line below your hand. You can draw this line with a marker if it helps you.
 - c. Move your hand to your elbow and draw another imaginary line above your hand. You can draw this line with a marker if it helps you.
 - d. Use the area between the imaginary lines on the back of your arm for injections. You can use any area you can pinch fatty tissue.
3. Front of the thigh.
 - a. To find where to inject, sit down.
 - b. Place your hand above your knee and draw an imaginary line above it. You can draw this line with a marker if it helps you.
 - c. Place your hand at the very top of your thigh and draw an imaginary line above it. You can draw this line with a marker if it helps you. Draw an imaginary line down the center front of your leg and the outer side of your leg. You can draw this line with a marker if it helps you.
 - d. Use the area between the imaginary lines for injections. You can use any area you can pinch fatty tissue.